

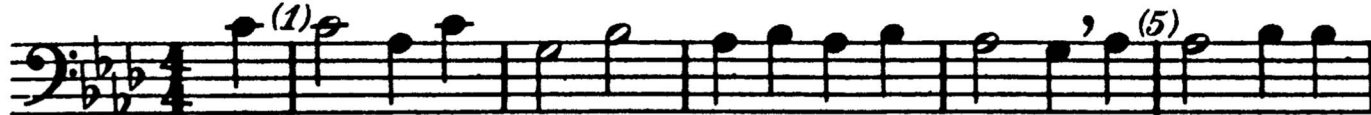
1. ADESTE FIDELES

(O Come, All Ye Faithful)

3rd PART-TROM. or BAR. b^3
BASSOON, CELLO

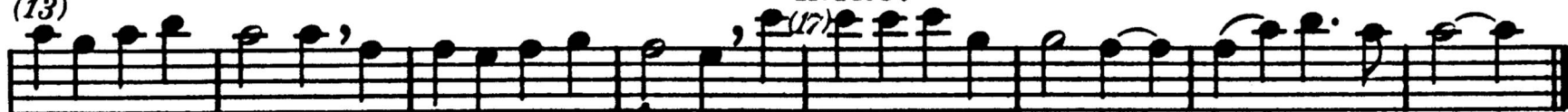
Maestoso

JOHN READING



(13)

★ INTRO.



2. HARK! THE HERALD ANGELS SING

Con moto

FELIX MENDELSSOHN



★ INTRO.



3. JOY TO THE WORLD

3rd PART-TROM. or BAR. 9:
BASSOON, CELLO

G. F. HANDEL



Musical notation for "Joy to the World" in bass clef, 2/4 time. The score consists of two staves. The first staff begins with a measure marked (1) and contains a sequence of eighth and sixteenth notes. A measure marked (5) follows. The second staff begins with a measure marked (13) and contains a sequence of eighth and sixteenth notes. A measure marked (17) is followed by a measure marked (9). An asterisk and the word "INTRO." are placed above the second staff.

4. SILENT NIGHT

Cantabile

FRANZ GRUBER

Musical notation for "Silent Night" in bass clef, 6/8 time. The score consists of two staves. The first staff begins with a measure marked (1) and contains a sequence of eighth and sixteenth notes. A measure marked (5) follows. The second staff begins with a measure marked (9) and contains a sequence of eighth and sixteenth notes. A measure marked (13) is followed by a measure marked (17). An asterisk and the word "INTRO." are placed above the second staff.

5. O LITTLE TOWN OF BETHLEHEM

LEWIS H. REDNER

Musical notation for "O Little Town of Bethlehem" in bass clef, 4/4 time. The score consists of two staves. The first staff begins with a measure marked (1) and contains a sequence of eighth and sixteenth notes. A measure marked (5) follows. The second staff begins with a measure marked (9) and contains a sequence of eighth and sixteenth notes. A measure marked (13) is followed by a measure marked (17). The word "INTRO." is placed above the second staff.



6. IT CAME UPON THE MIDNIGHT CLEAR

3rd PART- TROM. or BAR. b^3
BASSOON, CELLO

RICHARD S. WILLIS



(1)

(5)

INTRO.
★ (13)

(9)

Musical score for the 3rd part of 'It Came Upon the Midnight Clear'. The score is written in bass clef with a key signature of one flat (B-flat) and a time signature of 6/8. It consists of three staves of music. The first staff begins with a measure marked (1). The second staff begins with a measure marked (5) and includes a measure marked (9). The third staff begins with a measure marked (13) and is preceded by the word 'INTRO.' and a star symbol.

7. GOOD CHRISTIAN MEN, REJOICE
(In Dulci Jubilo)

Old German Melody

(1)

(5)

(10)

★INTRO.
(14)

Musical score for 'Good Christian Men, Rejoice'. The score is written in bass clef with a key signature of one flat (B-flat) and a time signature of 6/8. It consists of three staves of music. The first staff begins with a measure marked (1) and includes a measure marked (5). The second staff begins with a measure marked (10). The third staff begins with a measure marked (14) and is preceded by the word '★INTRO.' and a star symbol.



8. THE FIRST NOWELL

3rd PART- TROM. or BAR. 
BASSOON, CELLO

Con moto

French-English



Musical notation for 'THE FIRST NOWELL' in bass clef, 3/4 time. The score consists of three staves. The first staff begins with a measure marked (1) and contains a sequence of eighth and sixteenth notes. The second staff continues the melody, with a measure marked (9). The third staff includes an introduction marked '★ INTRO.' starting at measure (17), followed by a measure marked (21). The piece concludes with a double bar line.

9. ANGELS WE HAVE HEARD ON HIGH

French-English

Musical notation for 'ANGELS WE HAVE HEARD ON HIGH' in bass clef, 4/4 time. The score consists of three staves. The first staff begins with a measure marked (1) and contains a sequence of eighth and sixteenth notes. The second staff continues the melody, with a measure marked (15). The third staff includes an introduction marked '★ INTRO.' starting at measure (19). The piece concludes with a double bar line.



10. BEAUTIFUL SAVIOR

3rd PART - TROM. or BAR. 
BASSOON, CELLO

12th Century Tune



Musical notation for "Beautiful Savior" (12th Century Tune). The first staff shows the main melody starting with a circled (1) above the first measure. The second staff is an introduction starting with a circled (9) above the first measure and a circled (5) above the fifth measure. A star above the thirteenth measure is labeled "INTRO." and "(13)".

11. AWAY IN A MANGER

CARL MUELLER

Musical notation for "Away in a Manger" (Carl Mueller). The first staff shows the main melody starting with a circled (1) above the first measure and a circled (5) above the fifth measure. The second staff is an introduction starting with a circled (9) above the first measure and a circled (13) above the thirteenth measure, which is also marked with a star and labeled "INTRO.".

12. GOOD KING WENCESLAS

Traditional

Musical notation for "Good King Wenceslas" (Traditional). The first staff shows the main melody starting with a circled (1) above the first measure and a circled (5) above the fifth measure. The second staff is an introduction starting with a circled (9) above the first measure and a circled (13) above the thirteenth measure, which is also marked with a star and labeled "★ INTRO.".

